

# Walk- in Programmable Constant Temperature Humidity Test Chamber



## Summary:

Walk-in constant temperature and humidity laboratory is a high and low temperature environment, testing electronic products, materials, electrical, instruments and meters of various performance Pointers. Why do electronic products do constant temperature and humidity environment test? With the rapid development of modern industrial technology, the application fields of electronic and electrical products are increasingly broad, and the environmental conditions they are subjected to are more and more complex and diverse. Only by reasonably specifying the environmental conditions of the product and correctly choosing the environmental protection measures of the product can the product be protected from damage during storage and transportation and be safe and reliable during use. Therefore, the artificial simulation environmental test of electronic and electrical products is to ensure that they are safe and reliable in all aspects of production, transportation and use. The artificial simulation environmental test of electronic and electrical products before leaving the factory is an essential and important link to ensure quality, so whether the environmental test conditions, test methods and test equipment meet the standards is of great importance.

Suitable for electrical, electronic, mechanical, automotive parts and other products, parts and materials for high and low temperature, temperature and humidity test or storage, simulated temperature change conditions for products, parts and materials quality and reliability test.

## Standard

GB10589-89 Technical conditions for low-temperature testing room  
 GB/T10586-89 technical conditions for humidity testing room  
 GB/T2423.1-2001 testing methods for low-temperature  
 GB/T2423.2-2001 testing methods for high-temperature  
 GB/T2423.3-93 technical conditions for humidity testing room  
 IEC60068-2-1.1990 testing methods for low-temperature  
 IEC60068-2-2.1974 testing methods for high-temperature  
 GJB150.3 High-temperature test  
 GJB150.4 Low-temperature test  
 GB/T2423.22 temperature test

## Features:

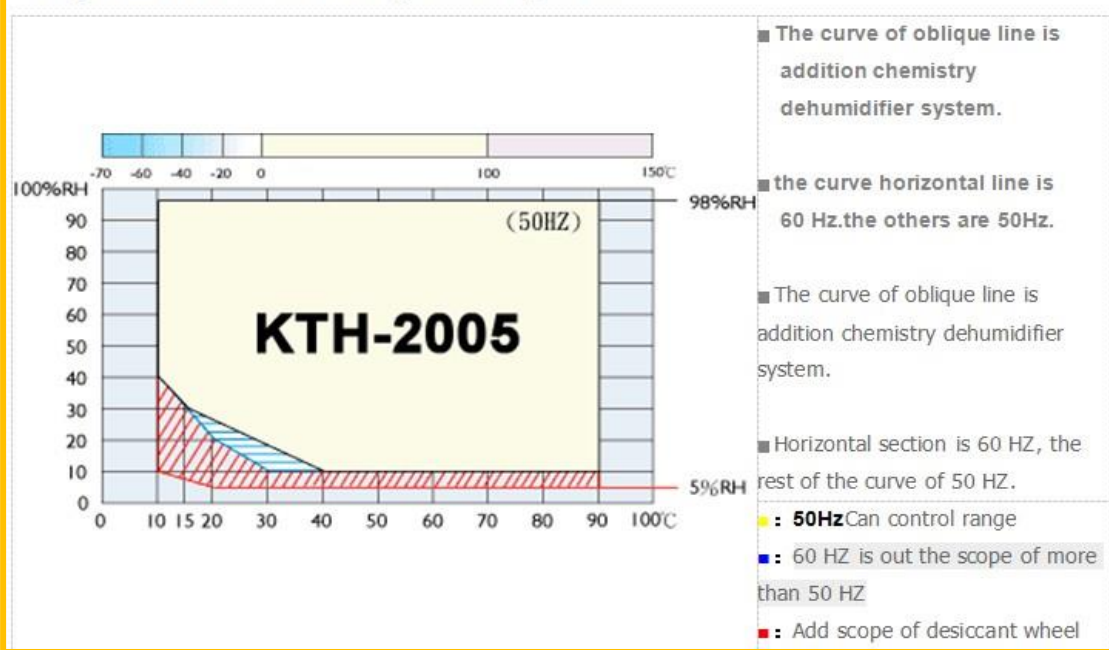
1. Large walk-in constant temperature and humidity testing machine has a very wide range of controlling the temperature and humidity that can fulfill user's needs. It is stable, balanced heating and humidification performance, , it also can be high accuracy and high stability for temperature and humidity control performance.
2. Large walk-in constant temperature and humidity testing machine is equipped with high-precision intelligent thermostat, controller of temperature and humidity using touch-screen display. Optional equipped with temperature and humidity records.
3. Refrigeration circuit of large walk-in constant temperature and humidity testing machine automatically select to operate performance of refrigeration circuits, so that it starts cooling at high-temperature state.
4. Door of large walk-in constant temperature and humidity testing machine with large viewing window for observation of the testing sample.
5. Large walk-in constant temperature and humidity test machine is equipped with advanced security, protective device leak circuit breakers, over-temperature protective device, lack phase protective devices and lack water protector.

## Specifications :

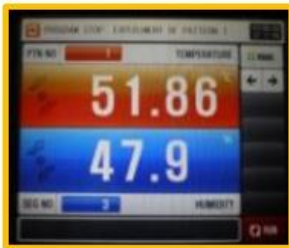
| size (cm)         | According to customer specified size for design |
|-------------------|---|
| Temp range        | -70°C~150°C (A: -20°C; B: -40°C; C: -70°C )     |
| Temp. fluctuation | ≤±0.5°C(standard)                               |
| Temp evenness     | ≤±1°C   |
| Temp deviation    | ≤1°C  |

|                            |   |
|----------------------------|---|
| Accuracy                   | 0.5°C, 2.5%R.H  |
| Humidity range             | 20%~95%R.H  |
| Humidity deviation         | ±2% R.H   |
| Temp rise speed            | 1.0°C~4.0°C/min   |
| Temp down Speed            | 0.7°C~1.2°C/min   |
| Heating time needed        | RT°C~200°C≤30min  |
| Cooling time needed        | RT°C~-40°C≤60min  |
| Machine noise              | 72 dB (A)   |
| Materials made             | Inner chamber: # SUS 304 stainless steel  |
| Wind cycling way           | Centrifugal fan forced air circulation  |
| Refrigeration way          | Single stage compression refrigeration  |
| Refrigerater               | French Tecumseh   |
| Refrigerants               | R404A USA Dupont environmental protection refrigerant   |
| Condensing way             | Air-cooled or water-cooled  |
| Heater                     | Nickel chrome heating wire heater   |
| Humidifier                 | Semi-closed steam and wet   |
| Water supply way           | Automatic cycling water supply  |
| Controller                 | Korea Temi  |
| Standard accessories parts | Observe window (double-deck cavity toughened glass),<br>50mm testing hole, PL internal bulbs, partition plate,<br>dry and wet ball gauze, 3 fuses, 1 power line   |
| Safety device              | Compressor overload protection, fuse protection, Overheat protection,<br>humidifier dry-combustion protection, high/low pressure of refrigerator,<br>over-humidity and temperare protection,water shortage protection,<br>over- current protection, Over-current circuit breaker, earth l eakage protection |

## Temperature and humidity working curve



## Every Making details for your good reference.



### Touch screen controller

With digital display, graph display, error diagnostic, programming and segments setting, alarm setting, history display, password protection b,Program up to 120 pattern & 999 segment



### Humidity Sensor

Dry and wet bulb method (this is standard)  
High accuracy Rotronic digital humidity probe (optional )



### Viewing Window

200mmx300mm (WxD)  
With fluorescent lamp



### Cable Port

O.D.: 50mm (standard)



Castors



Compressor Design



Lockable Power Switch



Adjustable Shelf



USB Flash Memory

Replace the chart recorder  
Data stored directly



Water Tank

With water level detector



Circuit system



RS485/232 interface

With PC software

If you have any special requests, pls kindly share with us, we have professional team service for you!

Real imagines for your good reference.

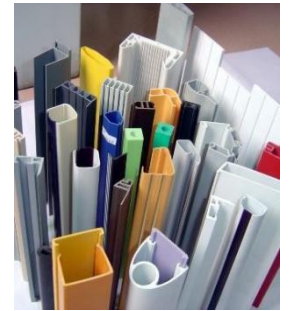
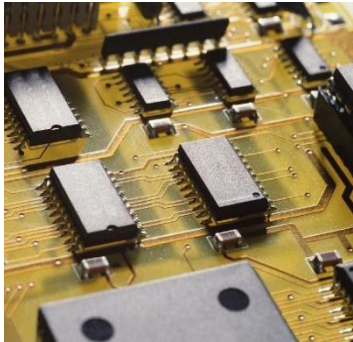
### What we produce? (always accept customize)

- |                              |                          |                                |
|------------------------------|--------------------------|--------------------------------|
| 1. Universal tensile testers | 2. Hardness testers      | 3. Environmental chambers      |
| 4. Mobile/Laptop testers     | 5. Paper&package testers | 6. Abrasion resistance testers |
| 7. Insertion force tester    | 8. Color testers         | 9. Rubber/plastic testers      |
| 10. Fabric testers           | 11. Wire testers         | 12. Other testers              |

The catalog doesn't include all the T&H series, OEM is acceptable



This test chamber can be widely used in many fields ,like electronics,appliance,vehicles,instruments, metal,food,chemicals ,building material,drug packages,space light material ect.





## Professional packing

**We have professional packaging teams and shipping forwarder to pack and deliver your products safely!**

- ❖ Out packing: Standard export wooden case.
- ❖ Inner packing: With careful stretch film wrap products, hard wood board + strong bandage to fix corners.
- ❖ Checking teams: Specialized staff to inspect and classified your goods.

