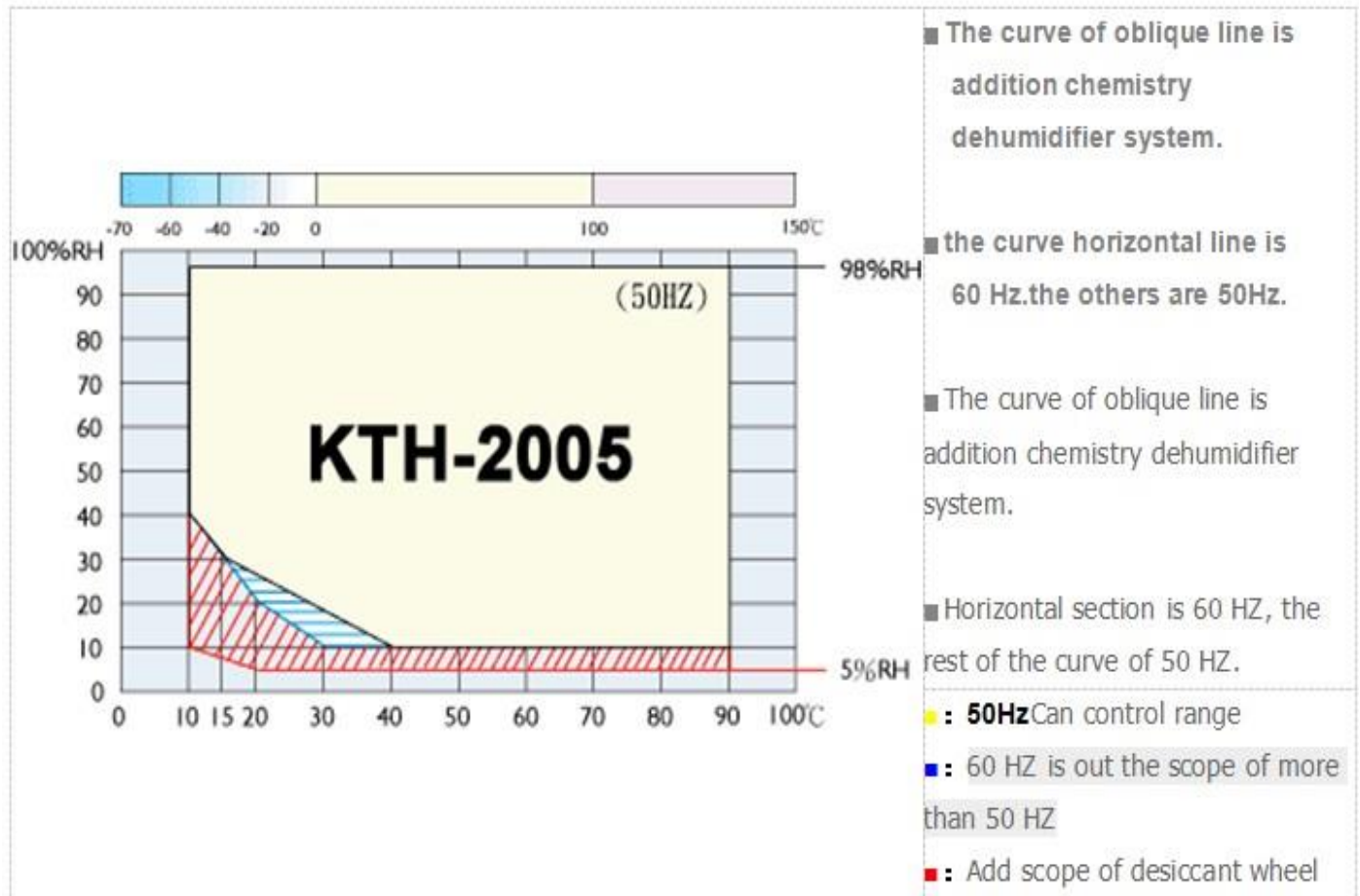


Dongguan SUNRISE Test Equipment Co., Ltd

Temperature And Humidity Test Chamber

Specification	SRTH-80	SRTH-150	SRTH-225	SRTH-408	SRTH-608	SRTH-800	SRTH-1000
Workroom Sizes (cm)	40*50*40	50*60*50	50*75*60	60*85*80	80*95*80	100*100*80	100*100*100
Inner chamber	80L	150L	225L	408L	608L	800L	1000L
Temperature Range	-40°C~150°C (A: -20°C; B: -40°C; C: -70°C)						
Temperature Fluctuation	≤±0.5°C(standard)						
Temperature Evenness	≤±1°C						
Temperature Deviation	≤1°C						
Accuracy	0.5°C, 2.5%R.H						
Humidity Range	20%~98%R.H						
Humidity Deviation	±2% R.H						
Temperature Rise Speed	1.0°C~4.0°C/min						
Temperature Down Speed	0.7°C~1.2°C/min						
Time needed for	RT°C~200°C≤30min						
Time needed for	RT°C~-40°C≤60min						
The machine noise	72 dB (A)						
Material	Inner chamber: # SUS 304 stainless steel						
Wind Cycling Way	Centrifugal fan forced air						
Refrigeration Way	Single stage compression refrigeration						
Refrigerater	French Tecumseh						
Refrigerants	R404A USA Dupont environmental protection refrigerant						
Condensing Way	Air-cooled or water-cooled						
Heater	Nickel chrome heating wire						
Humidifier	Semi-closed steam and wet						
Water Supplying Way	Automatic cycling water						
Standard Accessories parts	1 Observe window(double-deck cavity toughened glass),50mm testing hole,PL internal bulbs,partition plate,dry and wet ball gauze,3 fuses,1 power line						
Safety device	Compressor overload protection, fuse protection, Overheat protection,humidifier dry-combustion protection ,high/low pressure of refrigerator ,over-humidity and temperare protection,water shortage protection,over- current protection,Over-current circuit breaker,earth l eakage protection						

Temperature and humidity working curve



Features

- LED Touch Screen
- PID Control of Temperature and Humidity
- Both Temperature and Humidity are Programmable (can have 100 pattern, each pattern has 999 segment)
- With Humidity Sensor
- With RS485/232 output to computer
- Window Software
- Remote fault notification(optional)
- With Viewing Window
- With thermostats (prevent overheat)
- Cable Ports(50mm diameter)
- With Data Storage function by USB Flash Memory
- Protection (phase protection, overheat, over current etc)
- Water Tank with level detector
- Adjustable Shelf
- Anti-condensation technology of the workroom .(Optional)
- User friendly three color LED indicator lamp ,easy to read working condition

Model:

SRTH-B (80/150/225/408/608/800/1000)



SRTH-B Series:
Outer Material: Stainless Steel

SRTH-K (80/150/225/408/608/800/1000)



SRTH-K Series:
Outer Material: Bsimilarg Finish

Application:

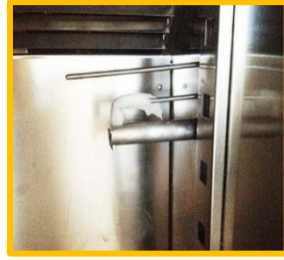
Programmable Temperature Humidity Climatic Test Chamber Price is applied to test the materials in heat-resistance, cold-resistance, dry-resistance, moisture-resistance. It is simple to operate and program easy to edit. It can show the set values and operative time.

Programmable Temperature Humidity Climatic Test Chamber Price applied to test the products quality, such as electronic, plastic products, electrical appliances, instruments, food, vehicles, metals, chemicals, building materials, aerospace, medical care and so on.



Touch screen controller

a,With digital display, graph display, error diagnostic, programming and segments setting, alarm setting, history display, password protection
b,Program up to 120 pattern & 999 segment



Humidity Sensor

Dry and wet bulb method (this is standard)
High accuracy Rotronic digital humidity probe (optional)



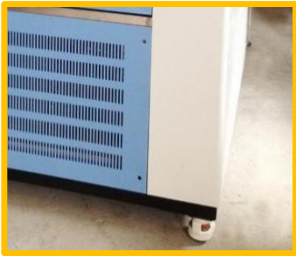
Viewing Window

200mmx300mm (WxD)
With fluorescent lamp



Cable Port

O.D.: 50mm (standard)



Castors



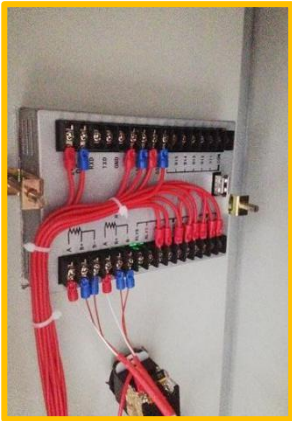
Compressor Design



Lockable Power Switch

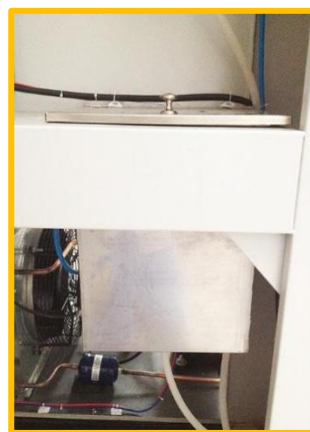


Adjustable Shelf



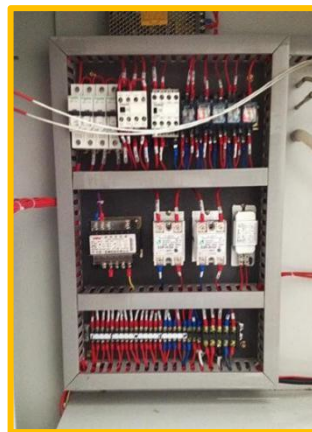
USB Flash Memory

Replace the chart recorder
Date stored directly



Water Tank

With water level detector



Circuit system



RS485/232 interface

With PC software

Parameter can be customizable according to users' need.

The catalog doesn't include all the T&H series,OEM is acceptable

