

High Low Temperature Tensile Test Machine

Model: SR-110

Summary:

The **High-Low Temperature Tensile Tester** is equipped with special high and low temperature box . With the temperature protection of sensor, high and low temperature fixtures, and sliding auxiliary, the test is completed. The high and low temperature tensile testing machine is suitable for universal materials testing, for tensile, compression, bending, peeling, tearing, peeling, bursting, fatigue test on metal rod, metal plate, rubber, PU, leather, plastic, foam, sponge, water-proof material, cable, wire, fabric, nettle, non-woven, etc..



Applicable Industry:

This machine is widely used in controlling the quality; Rubber & Plastics; metallurgical iron and steel; manufacturing machinery; electronic equipment; automobile production; textile fiber; wire and cable; packaging materials and foodstuffs; instrumentation; medical equipment; civilian nuclear energy; civil aviation; colleges and universities; research Laboratory; inspection arbitration, technical supervision departments; building materials, ceramic; Petroleum & Chemical; other industries.

Applications:

1. Deformation under defined load: Test deformation under defined load of tested sample.

2. Load under defined deformation: Test load under defined deformation of tested sample.
3. Software can issue report with results for max. force, elongation, tensile strength, peel strength, tear strength, compression strength, etc.
4. Tensile Strength Test Equipment can do different test as per customer requirement such as peel test, tear test, compression test, bend test with different clamps.

Standards:

ISO783: 1989 /

GB/T4338-1995 :

Metallic materials —
Tensile testing at
elevated temperature.

ISO15579:2000 /

GB/T13239-2006 :

Metallic materials —
Tensile testing at low
temperature



Features:

1. The structure of the big force capacity high low temperature tensile strength tester is made of the paint-coated aluminium blanking plate and built-in high precision, low resistance, no clearance double ball screw and guide pillar, improve the efficiency and rigid structure load.
2. Use servo motor which ensure high efficiency, steady transmission and low noise. The accuracy of speed can be controlled in 2%.
3. The microcomputer system using commercial computer as the main control machine, cooperate with our company special test software, can complete all the test set parameters, working state control, data acquisition and processing analysis, and the results indicate that the output and print.
4. Have steady performance, high accuracy, powerful software function and easy operation.
5. High low temperature chamber adopts double insulated glass door, the convenient user observation test, and adopts full stainless steel frame and bladder, not only beautiful, but also strong corrosion resistance.

Specifications of Tensile Tester System:

Capacity: 10,20,50,100,200,300,500,1000,2000, 5000kg optional

Unit choosing: g,kg,N,KN,LB

Operation method: Servo system, Computer + Software control

Resolution: 1 / 500,000

Accuracy: $\leq 0.5\%$

Testing speed: 0~500mm/min(can be set in computer)

Testing stroke: 400,500,600mm (Can customize)

Testing width: 30cm (Can customize)

Testing space: (LxWxH) 30x30x60cm

Motor: Servo motor + driver

Transmission way: High precision ball screw

Power: AC220V/50Hz

Specifications of Temperature Controlling System:

Inner dimension: (LxWxH)30x30x60cm (can be customized)

Temperature controlling system: Min.-60°C~Max.150°C (customized by customer needs)

Temperature controlling method: computer P.I.D.automatic control

Humidity range: 20%RH~98%RH

Stability : $\pm 2.5\%$ RH, $\pm 1^\circ\text{C}$

Uniformity: $\pm 3\%$ RH, $\pm 1^\circ\text{C}$

Heating System: SUS#304 stainless steel heater

Humidifying System: Surface evaporation way, transparent structure, convenient for observation

Cooling system: Fan cooling mode, high efficiency of all sealed compressor

Main Unit imagine of tensile tester

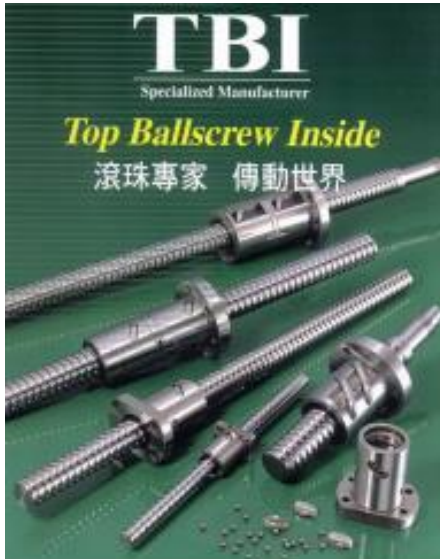
The drive system consist of servo control reduction motor, arc synchronous belt, ball screw, moving steadily, high working efficiency, low noise, no pollution.

Newest control board card, own better sampling rate



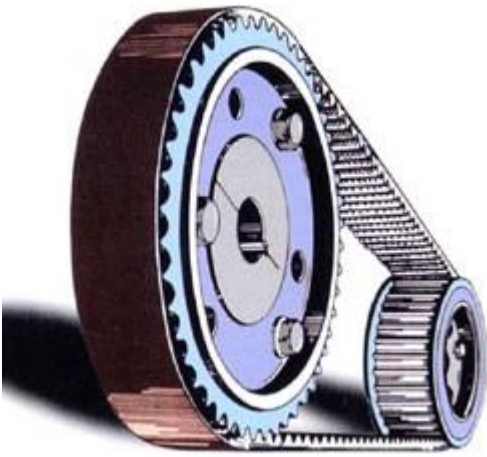
All input and output interfaces adopt high - speed optoelectronic isolation technology with strong anti-jamming capability

Taiwan TBI ball screws, better monitor the accuracy



Servo-drive, ensure revolve smoothly and steadily





Professional CNC processing technical, ensure best product precision and quality.



Electrical measurement and control system

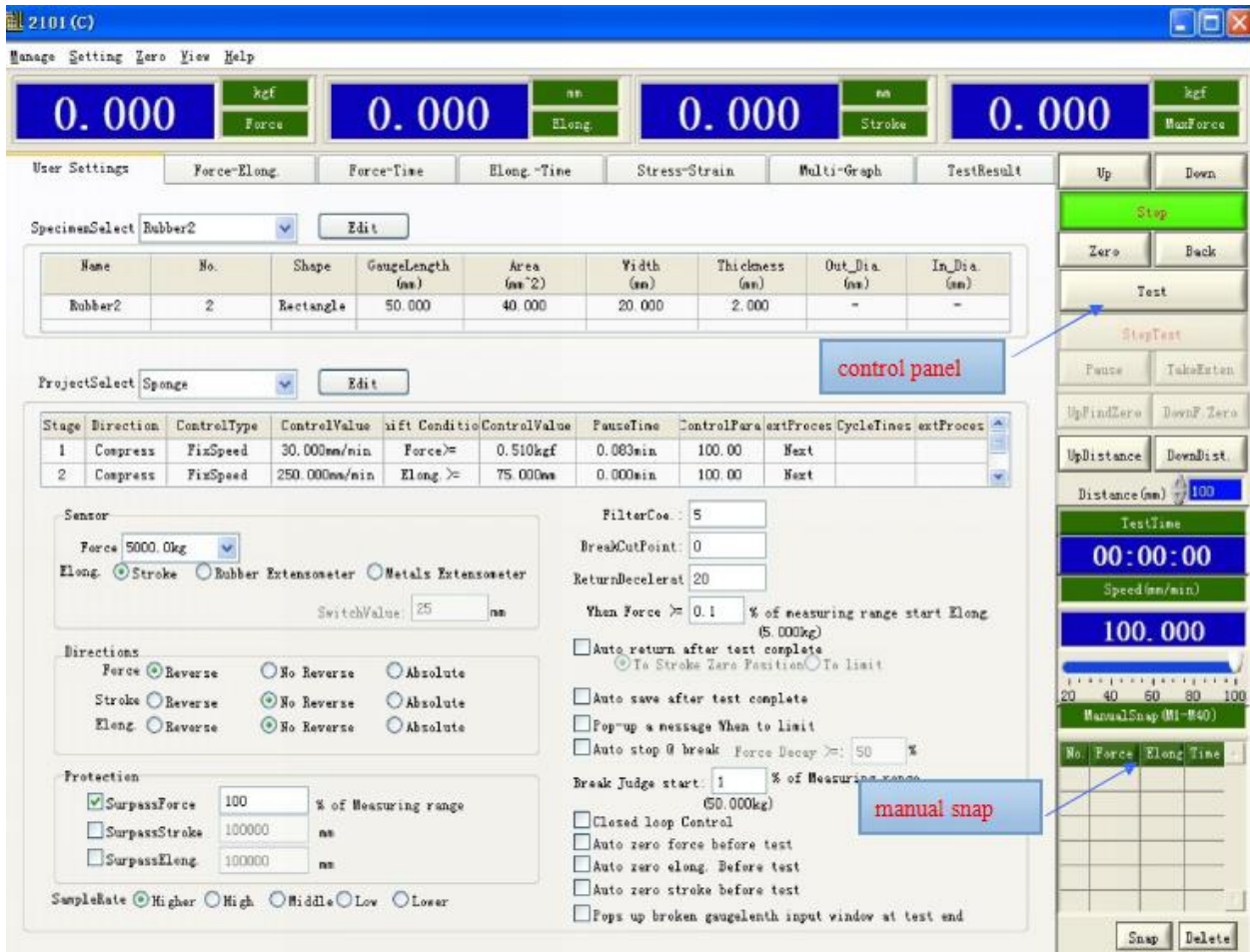
- 1) With protect function of overload, over current, over voltage, displacement limit, emergency stop etc.
- 2) The controller can control more load sensor, high integration, stable and reliable, easy to adjust
- 3) When finished testing, automatic stop
- 4) Control system with programmable amplifier A/D conversion, digital I/O, counting and pulse happen (PWM), and other functions in one
- 5) Mechanical zero setting, automatic force measurement, zero setting, calibration and save, highly integrated control circuit

Software and software interface

- 1) Based on Windows operation platform, the software adopting modulus design, with simple operation and powerful functions
- 2) The control panel has defined all the control parameters, data dealing method and report content

also the form, different test can be set according to the control panel.

- 3) Program adopting open database structure, integrated the GB, ISO,ASTM,JIN, DIN testing methods and can customized according to special requirements
- 4) With internet interface, can transmit, save and print data. Can connect enterprise Internal LAN and Internet.
- 5)Can edit and set the report form freely, also can print out the testing data.





After-sales Service



- 1) 12 months product warranty. Free components will be provided if any performance failure occurs within 12 months caused by non-human damage.
- 2) If you face any problems in future during testing process, We will serve as a technical adviser for lifetime, give you a reply within 48 hours and the solution provided within 3 working days.
- 3) We will provide some guidance for the normal use of the machine, and in the case of the machine is not used for a long time, protection guidance provided, then keep the good performance of the machine.
- 4) We can offer operation video and operation manual, also can provide video-conference.
- 5) If necessary, on-site service will be provided, but the transport and travel expense shall be borne by customer.

PRODUCTION LOGISTICS



1.Design



2.Production Material



3.Accessories Processing



4.Product Assembly



5.Product Debugging



6.Packaging & Shipping