

Keyboard Load Stroke Curve Test Machine

Model: S205

Summary:

This machine is applies to all kinds of rubber buttons, metal buttons and switches for shrapnel (load-displacement) curves,while under pressure to complete the rebound test. the operation is simple and convenient, and all the data can be stored (test conditions, load curve, test results, test report and so on. This machine adopts the servo motor drive,can provide high accuracy (load - stroke) measuring, and can get the key and switch curve completely accurate test.



Test Items:

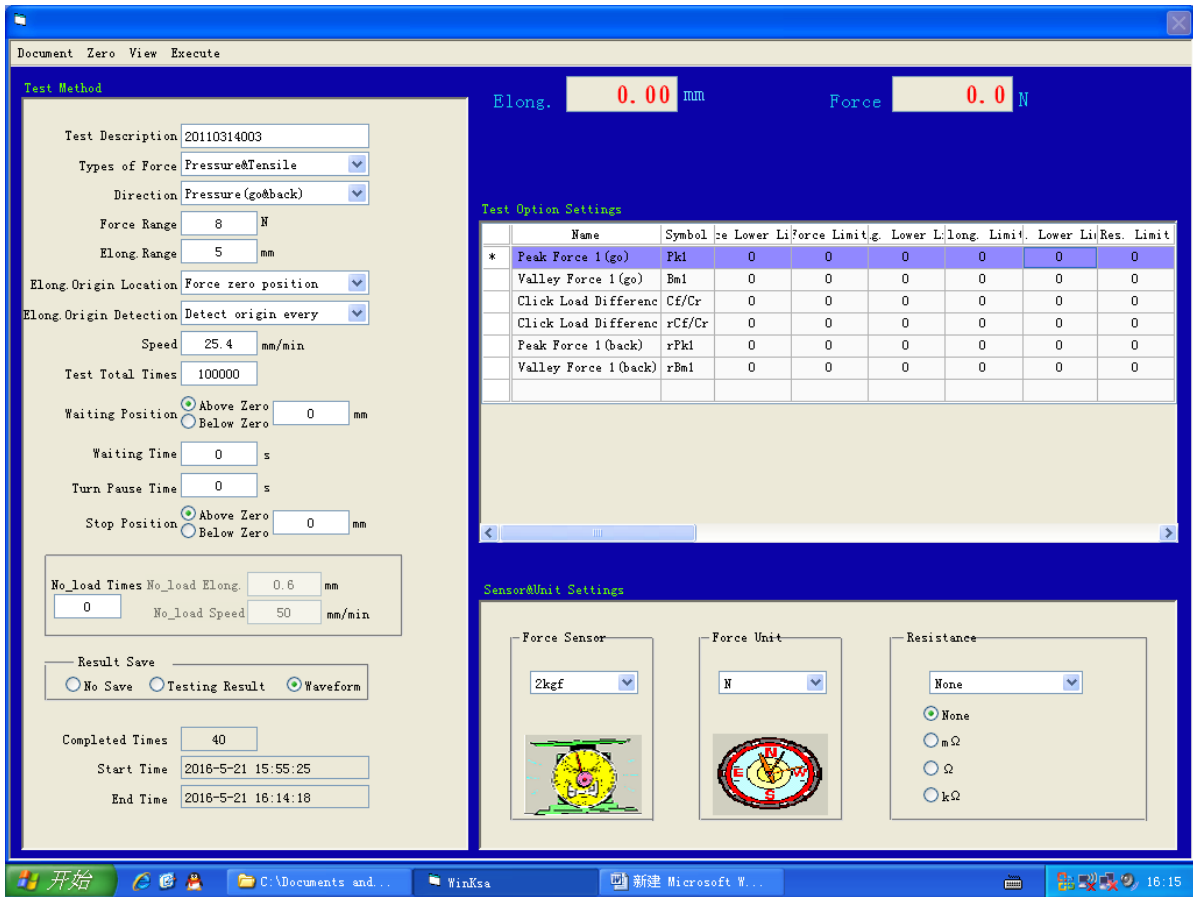
- *Rubber button (load-displacement) test*
- *Metal shrapnel button (load-displacement) test*
- *Cellphone,controller button (load-displacement) test*
- *All kinds of buttons,keyboard life decay experiment*

Features :

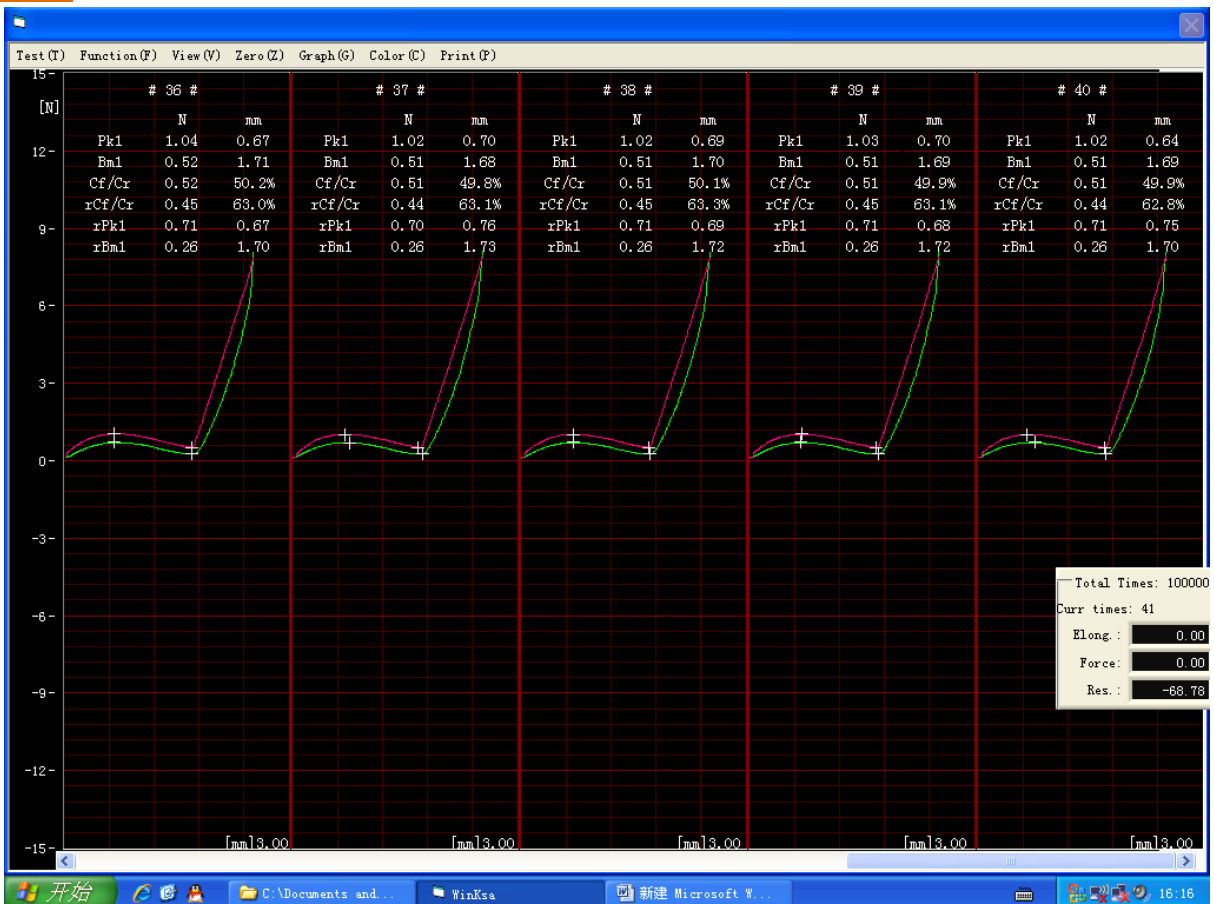
- Peak Force, Return Force, Return Force, Distance and Click rate can directly display the values in the chart, does not need manual calculation.
- Measurements graphs by computer memory can always zoom in and zoom out, a piece of A4 paper can be arbitrarily designated place lots of graphs.
- Determination exclusively eucalyptus can be input on the value of the higher and lower limit specifications, measurement results.
- Can automatically determine the OK or NO.
- Enter the maximum measured stroke and load, the computer automatically controlled.
- Load units display N, lb, gf, kgf and freely switch.
- Computer directly print and storage load - stroke curves, check the report. (No graph paper, general A4 paper is OK.
- Test data is stored on the hard disk (each piece of data can be stored and unlimited).
- Test conditions are set by the computer screen (including test stroke, speed, frequency, compressed , pause time, etc.).
- The rise of the content of inspection report can be modified at any time (Chinese or English).
- The inspection report can be generated automatically, without further input.
- Inspection reports can be converted to Excel and other instruments report format.

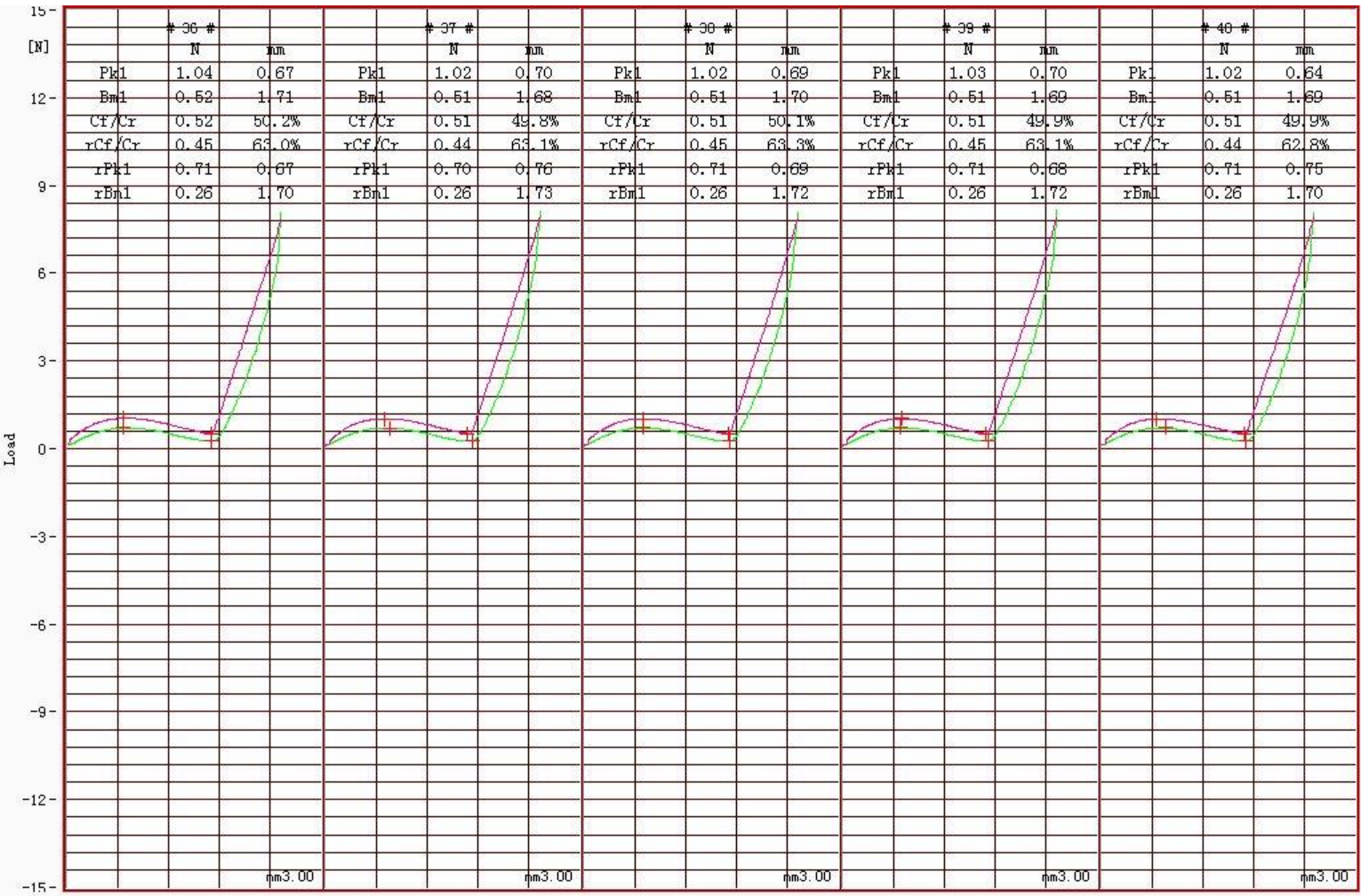
Specifications:

Capacity	2kgf,500gf (optional)
Minimum display load	0.01gf
Maximum test stroke	100mm
Minimum test stroke	0.01mm (0.001 for choose)
Speed precise	0.5%
Measurement speed range	1-100mm/min
Drive mechanism	Servo motor / ball screw
Size	300×270×500mm
Weight	32Kg
Power	AC 110V or 220V,5A

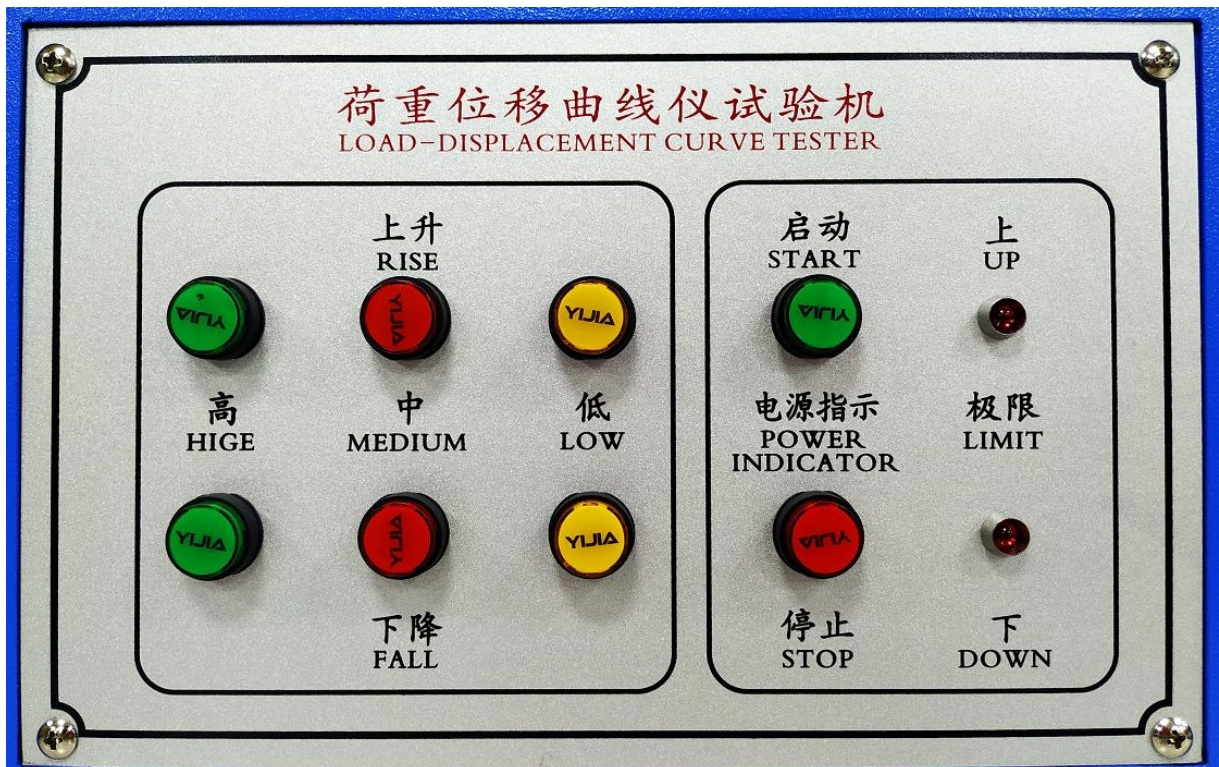


Testing Data :





Controller Images:





Professional packing

We have professional packaging teams and shipping forwarder to pack and deliver your products safely!

- ❖ Out packing: Standard export wooden case.
- ❖ Inner packing: With careful stretch film wrap products, hard wood board + strong bandage to fix corners.
- ❖ Checking teams: Specialized staff to inspect and classified your goods.



What we produce? (always accept customize)

1. Universal tensile testers
2. Hardness testers
3. Environmental chambers
4. Mobile/Laptop testers
5. Paper&package testers
6. Abrasion resistance testers
7. Insertion force tester
8. Color testers
9. Rubber/plastic testers
10. Fabric testers
11. Wire testers
12. Other testers