

# Computer Servo Connector Insertion Force Test Machine

*Model : 1220S*

## **Summary:**

Automatic insertion force test machine is suitable for connectors insertion and withdrawal force tests, the use of unique device automatically matched to find the heart of a variety of special fixture connector, the plug can be completely accurate force results. All the testing informations are setting by the computer and it can automatically store testing condition, test result, (load-displacement), curve, life decay curve and automatically generate reports.



This machine adopt high precision loading parts with servo motor for measurement and drive, can get precision insertion force result.

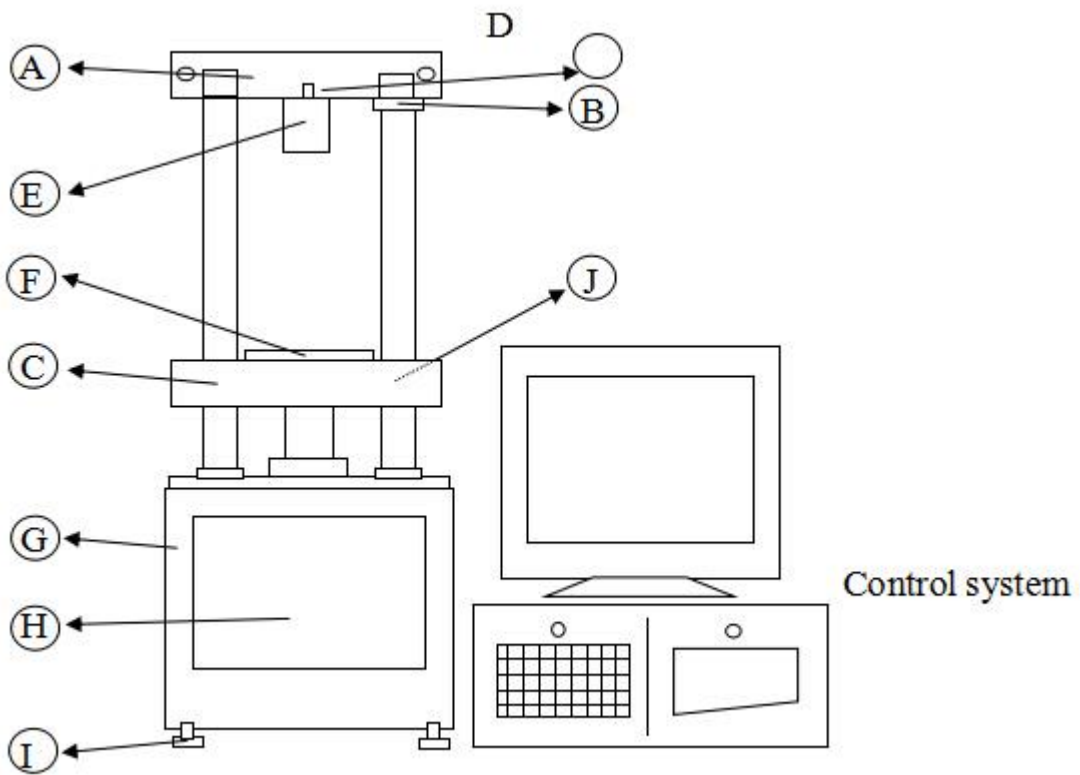
It is a kind of necessary machine for all kinds of connectors and electrical products manufactures for research and development together with quality control application.

## **Test Items:**

- Test hole plug connector.
- Test row of the connector plug
- Life test plug connector.
- Single-pin connector and plastic Retention Test
- Connector test
- Spring test
- Impedance measurements can be performed simultaneously (optional)
- Various compression, tensile breaking strength test

**Features:**

- 1.All the testing informations are setting by the computer and it can automatically store: testing condition,test result,(load-displacement),curve,life decay curve and automatically generate reports.
2. High precise: Load resolution: 0.01gf, Displacement: 0.001mm
3. Adopting high precision explosion Load Cell, Repeated errors: 0.01%
4. High stability: adopt Japan Panasonic servo motor drive and no space, no ground ball screw drive, can eliminate noise and resonance.
- 5.Can enter the upper and lower limit conditions and automatically rebel the test results Passed or Fail, the maximum, minimum, average and standard deviation, etc.

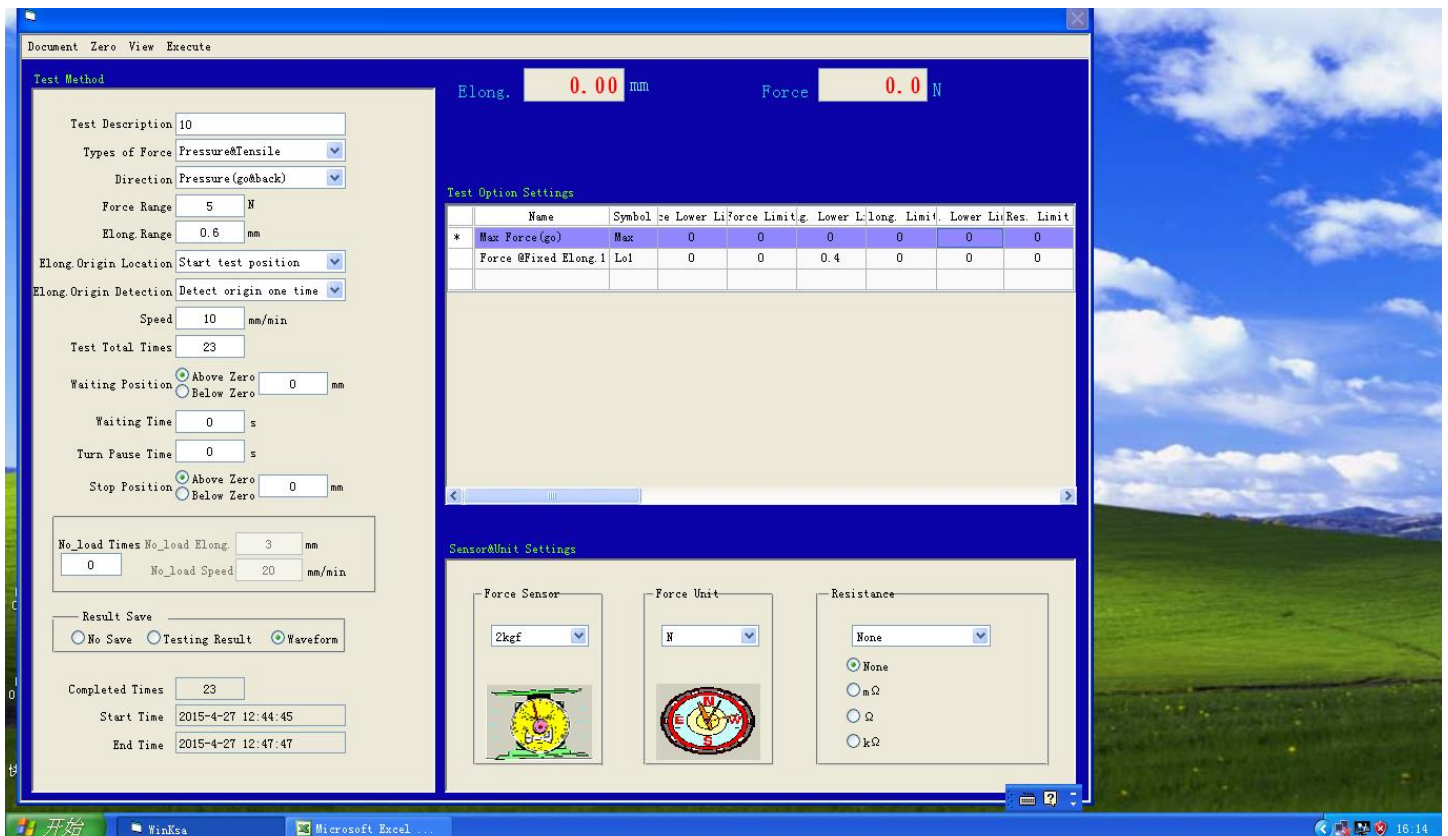


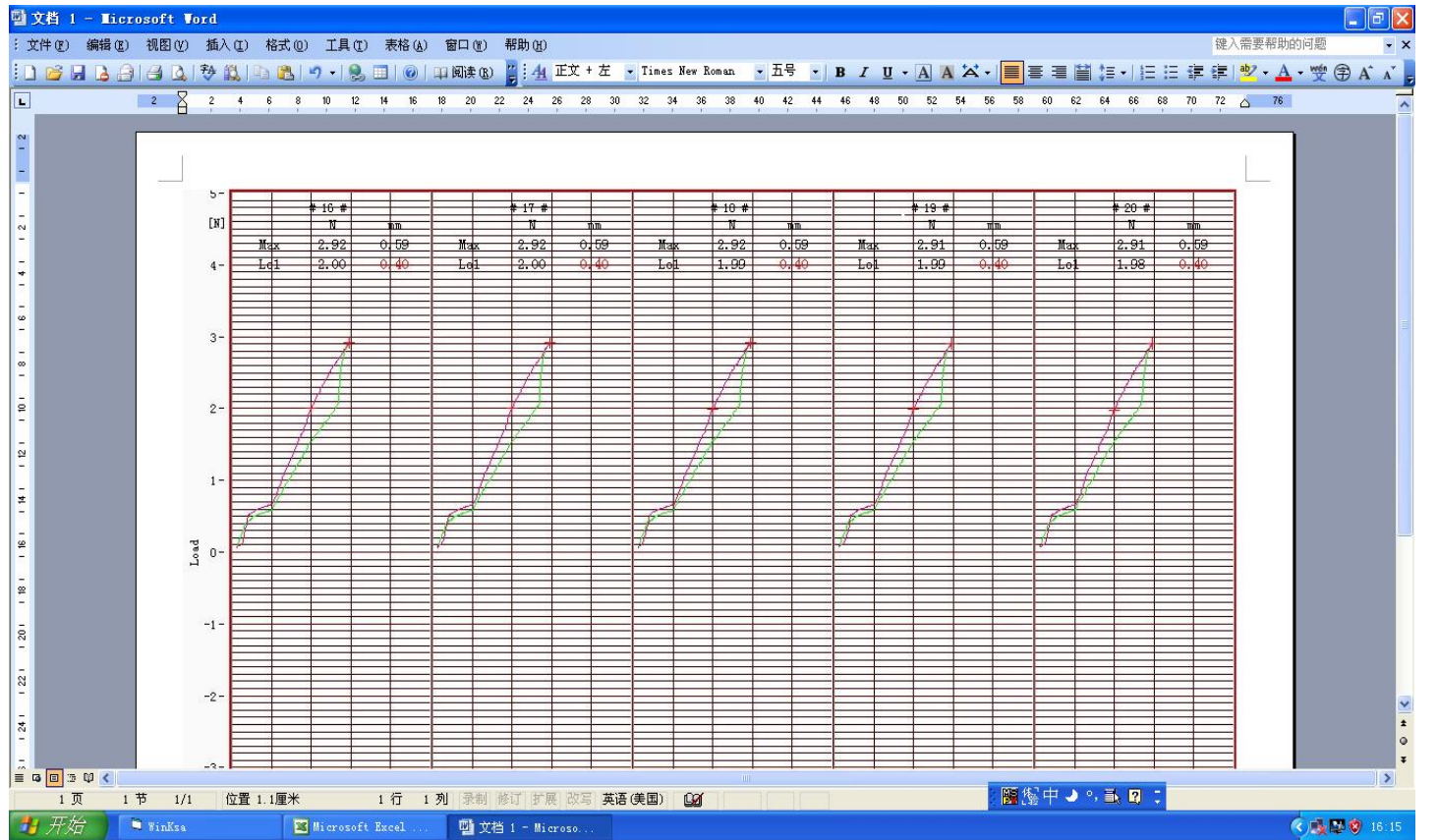
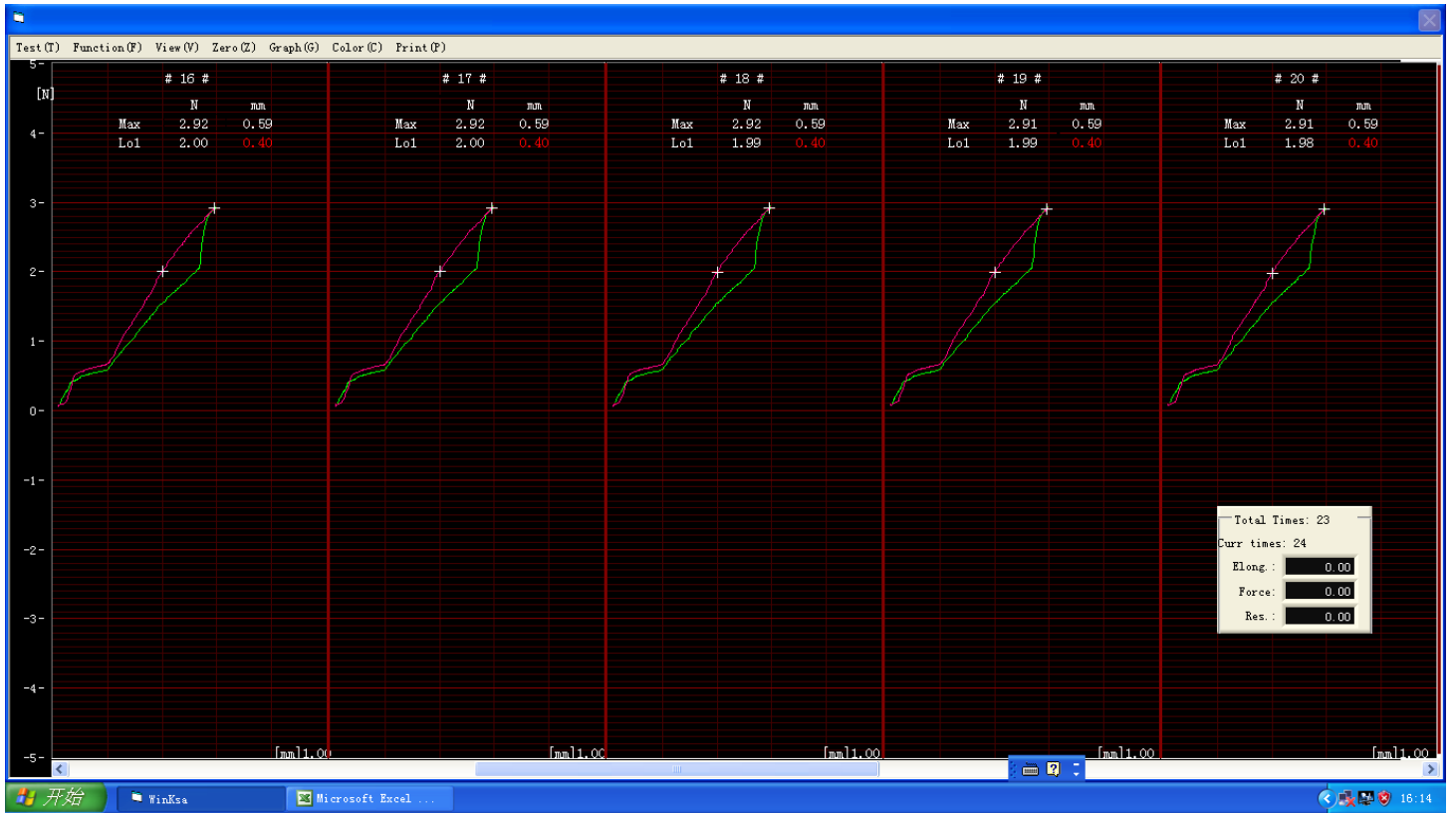
- (A) fixed rail
- (B) retaining ring
- (C) to move the bar
- (D) Load cell bolts
- (E) Load cell
- (F) fixture plate
- (G) machine body
- (H) Operating panel
- (I) feet

## Specifications:

Load capacity	2kg, 5kg, 20kg, 50kg, 100kg (optional)
Unit switch over	gf, kgf, lbf, N
Resolution	0.001kg
Load precision	±0.5%
Maximum travel	150mm
Test speed	0~200mm/min
Speed precision	0.5%
X,Y axis movement range	0~75mm
Displacement resolution	0.01mm
Dynamical System	Panasonic servo motor
Size	360*260*940mm
Weight	70kg
Power	220V,50HZ / Customized

## Operating Software Screenshot:





**Real Images:**

